

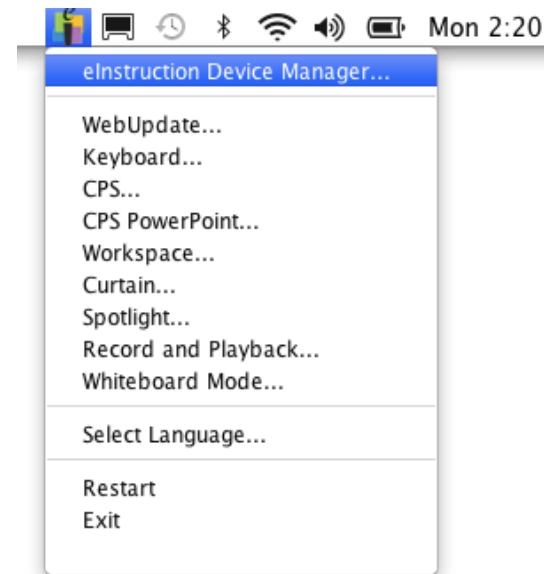
## Changing the Channel of an eInstruction Receiver

*on a Mac Machine*

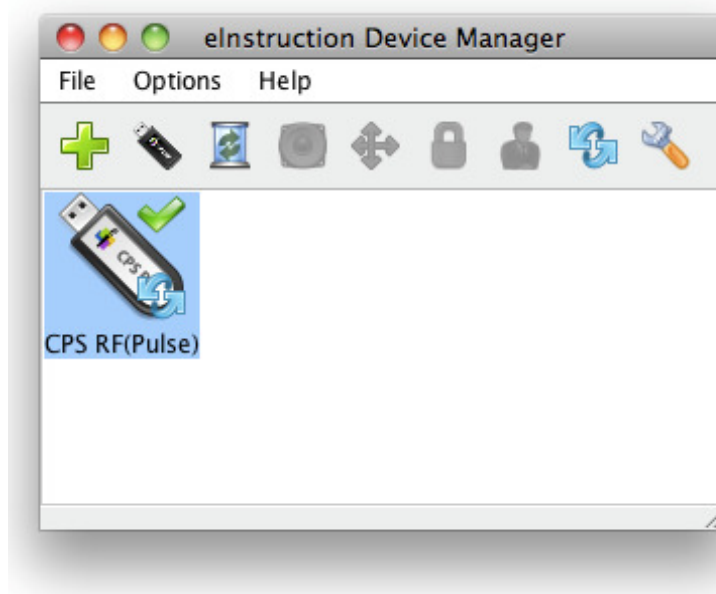
1. Click the **eInstruction icon**  in the notification portion of the taskbar in the upper right-hand corner of your desktop.



2. In the menu that opens, launch the **eInstruction Device Manager** by clicking **eInstruction Device Manager**.

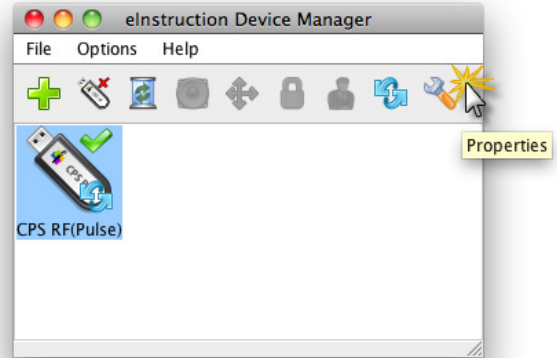
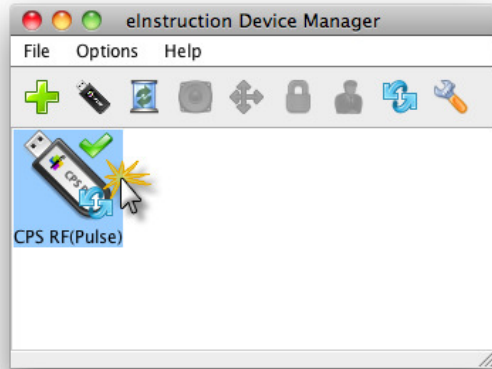


3. **eInstruction Device Manager** will open, displaying the receiver you have connected. A green checkmark will confirm that the receiver is connected.



4. Double click on the picture of the receiver you would like to select.

As an alternative, click on the receiver to select it and then click on the **wrench icon**.

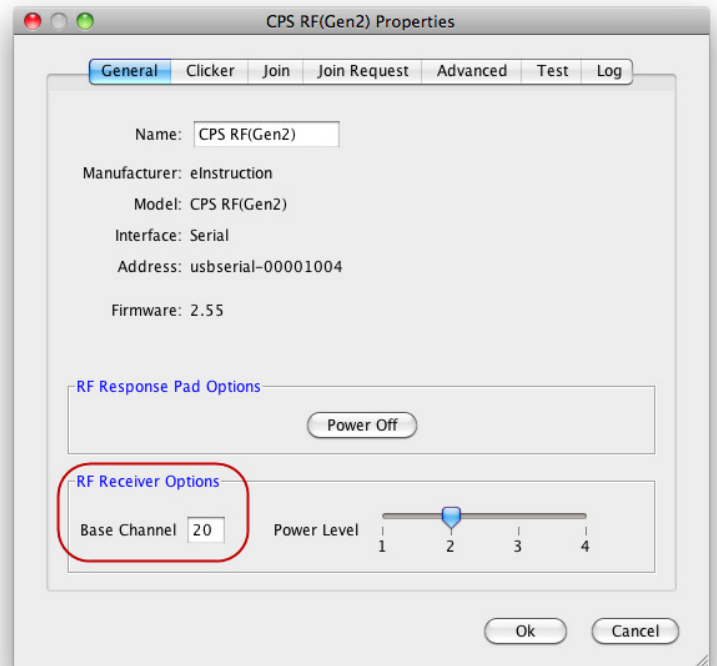


5. A window of **Receiver Properties** will open.

6. Locate the **Receiver Options** heading.

7. Notice the **Base Channel** to which the receiver is set. If you would like to change the receiver channel, use the keyboard to input a new channel number.

8. Left-click **OK** to save your new channel number and close the window.



**NOTE:** The receiver channel and response pad channel must match or they will not work. Please refer to instructions for *Changing the Channel of eInstruction CPS Pulse Response Pads* or *Changing the Channel of eInstruction CPS Gen2 Response Pads*.