

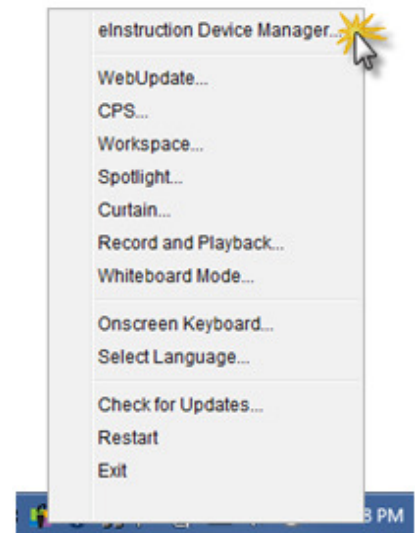
Changing the Channel of an eInstruction Receiver

on a Windows Machine

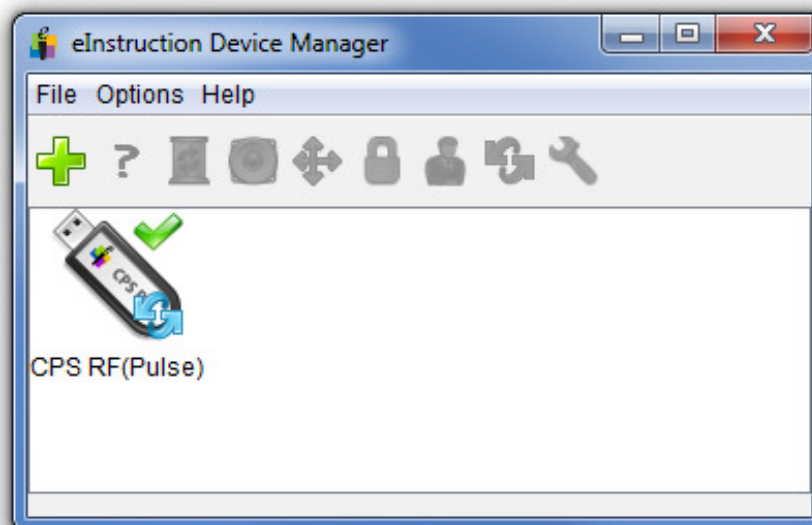
1. Left-click the **eInstruction icon**  in the notification portion of the taskbar in the lower right-hand corner of your desktop.



2. In the menu that opens, launch the **eInstruction Device Manager** by left-clicking **eInstruction Device Manager**.

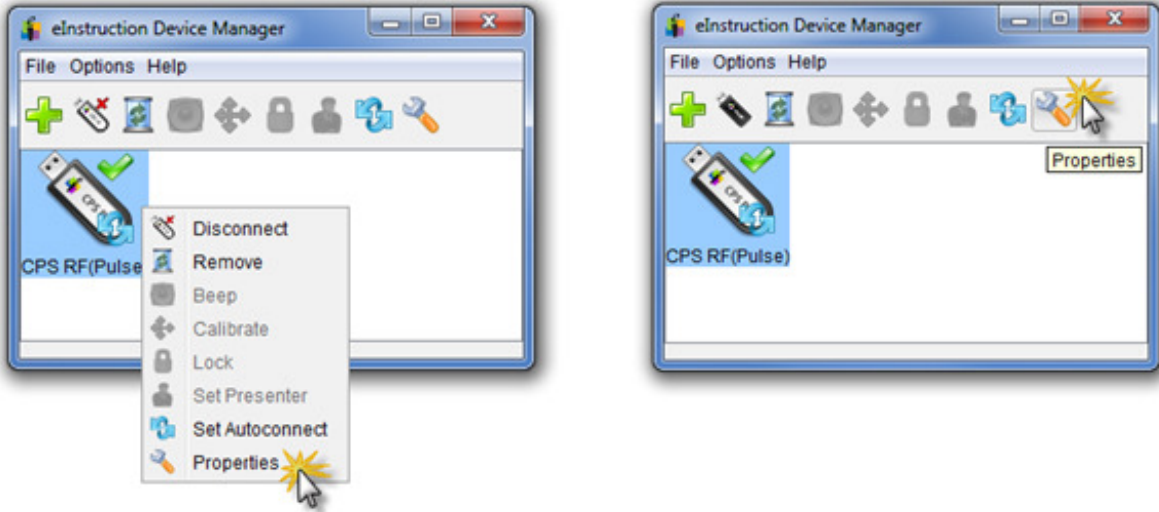


3. **eInstruction Device Manager** will open, displaying the receiver you have connected. A green checkmark will confirm that the receiver is connected.



- Right-click on the picture of the receiver you would like to select and choose **Properties** from the menu by left-clicking on **Properties**.

As an alternative, left-click on the receiver to select it and then left-click on the **wrench icon**.

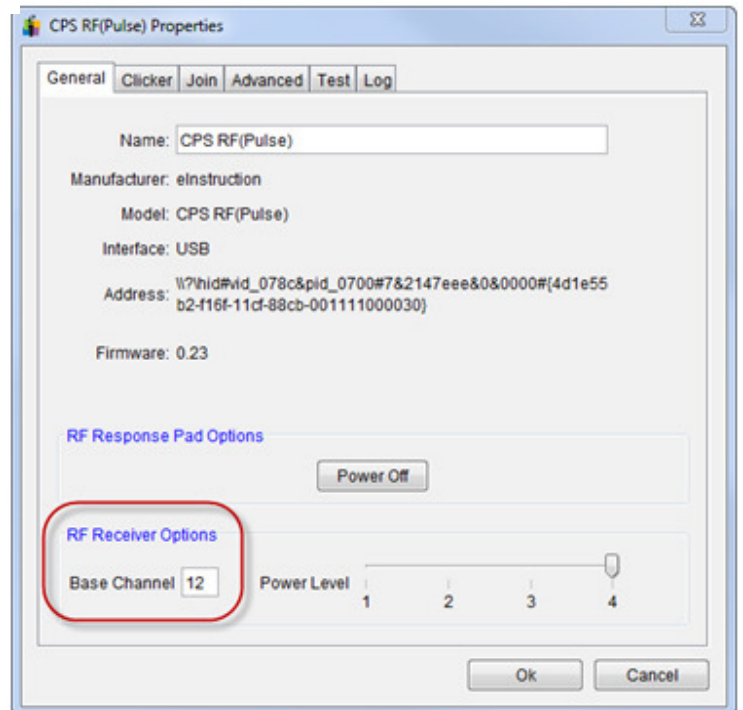


- A window of **Receiver Properties** will open.

- Locate the **Receiver Options** heading.

- Notice the **Base Channel** to which the receiver is set. If you would like to change the receiver channel, use the keyboard to input a new channel number.

- Left-click **OK** to save your new channel number and close the window.



NOTE: The receiver channel and response pad channel must match or they will not work. Please refer to instructions for *Changing the Channel of eInstruction CPS Pulse Response Pads* or *Changing the Channel of eInstruction CPS Gen2 Response Pads*.